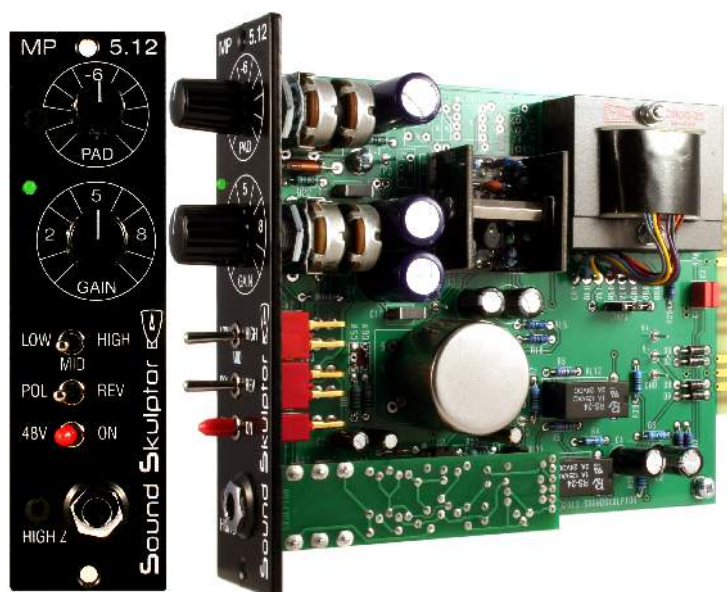




## Sound Skulptor MP5 I 2 User manual



### Installation

The lunchbox (or rack ) hosting the preamp must be installed in a well ventilated area. Class A circuits are known to produce heat. Do not omit the 2 fixing screws on the module front plate before moving. It is pretty heavy and the weight would put too much pressure on the back connector.

### Connections

The preamp connects to the rear female XLR for the microphone input and to the rear male XLR for output. The XLR pinout is as follows :

- Pin 1 : Ground
- Pin 2 : + Signal
- Pin 3 : - Signal

A Direct Instrument, high impedance, input is available on the front. A relay is automatically switched when a jack is inserted. It connects the DI signal to the input transformer of the preamp.

### GAIN

The GAIN potentiometer action is split in 3 areas by a toggle switch. LOW inserts a -20dB pad before the input transformer. MID and HIGH allows precise potentiometer setting in medium to high gains.

### PAD

The PAD potentiometer, placed after the output transformer can further attenuate the signal by 1 GdB. It can be used to reduce a very loud signal or to allow saturating the pre, for special effect. It should be set to maximum for normal use.

### LED

When green, the LED gives feedback about the preamp activity, when red, it is a clipping indicator.

### POL

Reverses phase in the right position.

### 48V

Activates phantom power in the right position, for static microphones. Do not forget to mute monitoring before switching.